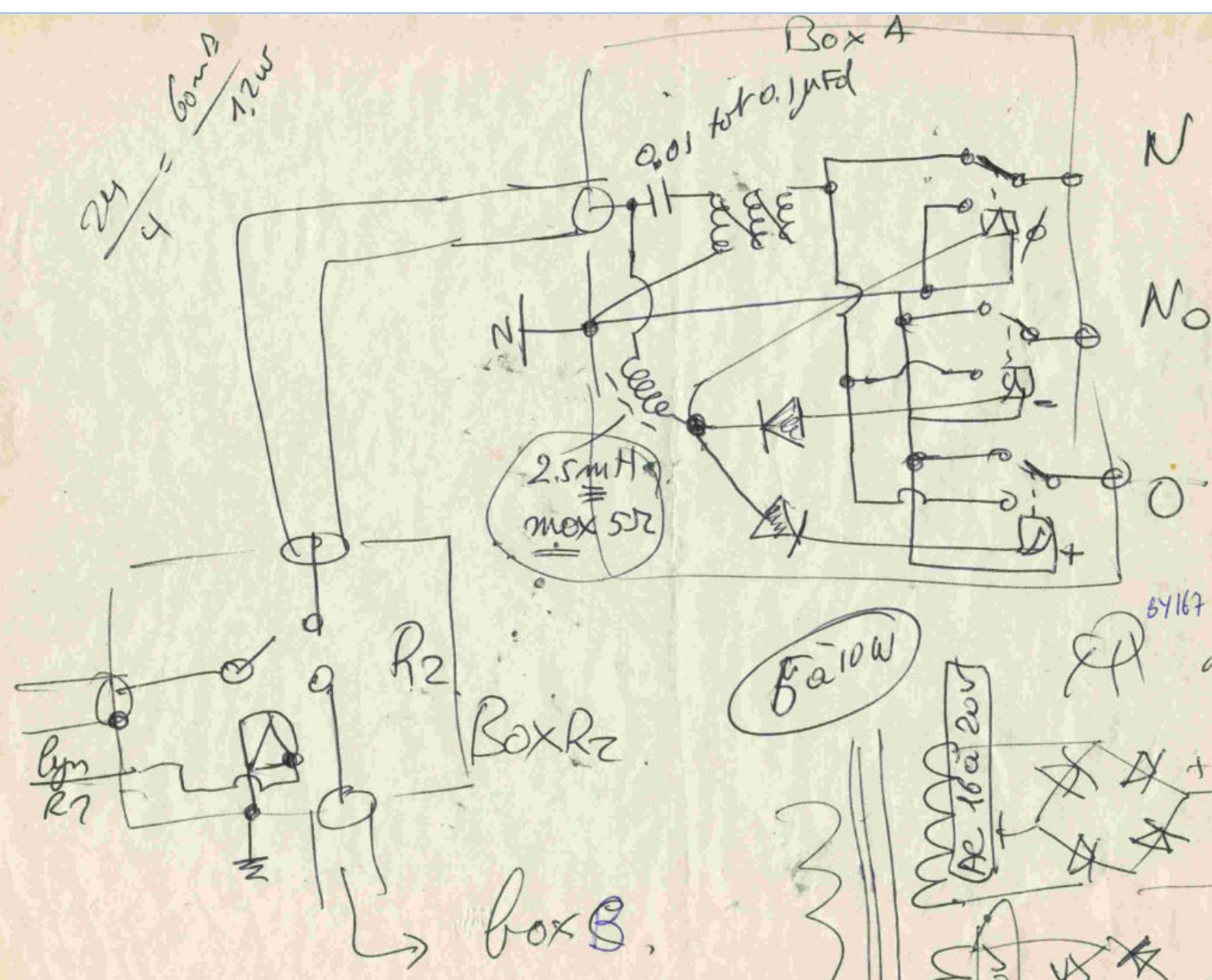


$$\frac{24}{4} = \frac{60\text{VA}}{1.2\text{W}}$$



5Y167

5A 10W

AC 16-20V

16-20V

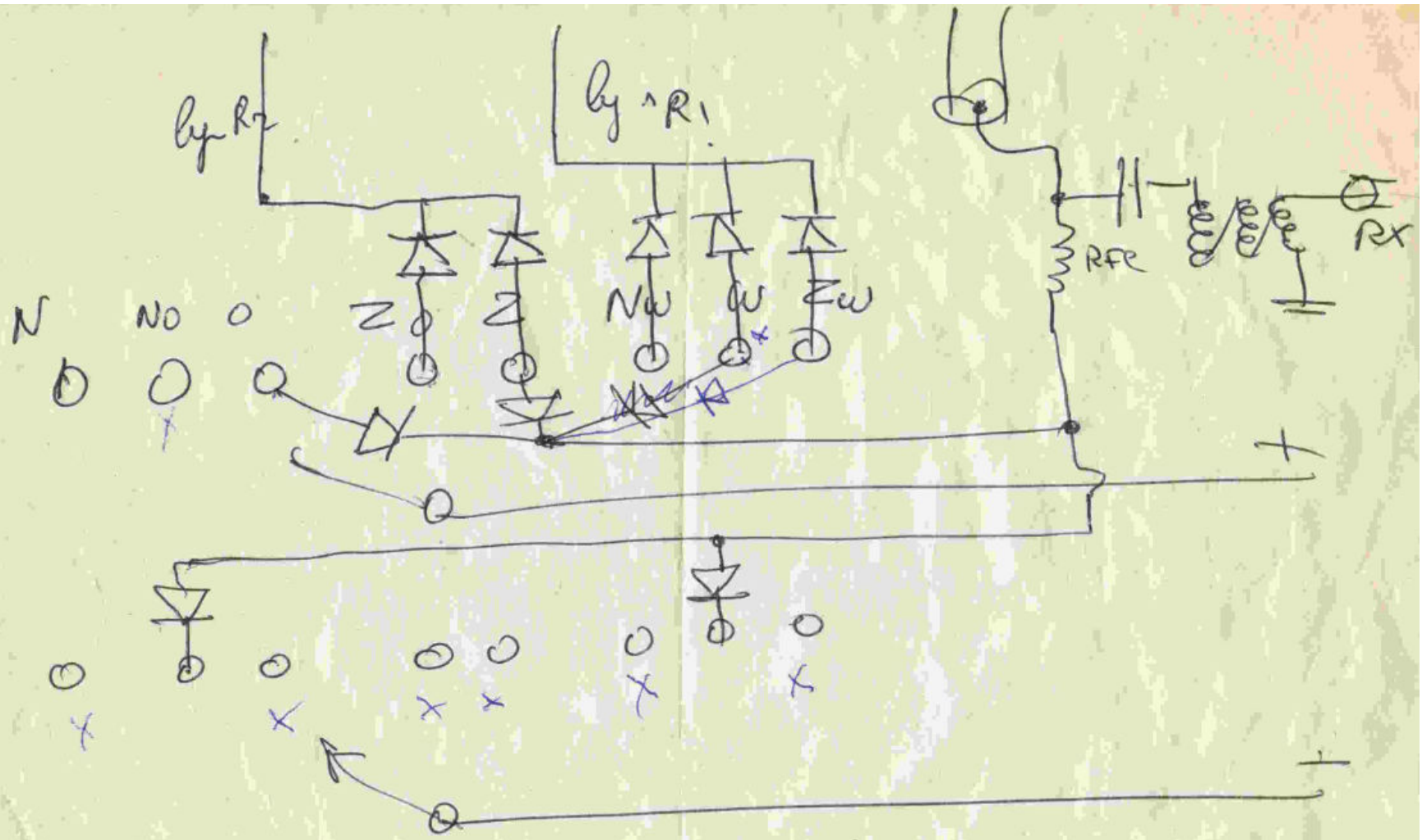
1000 $\mu\text{F}$  35V



$U_{ca\text{max}}$	N	No	0	<del>Z<sub>0</sub></del>	Z <sub>0</sub>	Nw	w	Zw
U <sub>red</sub> A	<del>⊗</del>	-	+					
B				+	∅			
C						∅	-	+
R <sub>2</sub>		∅		+	+		∅	
R <sub>1</sub>		∅		∅			+	
$U_{ca\text{ly}}$								

ZETTLER AZ 692-560-2  
 250V 8A ~AC 1  
 24V -  
 10A 250VAC RES 120 / 160  
 10A 24VAC 112VAC 120





DIODE : 1N4007